

Sustainability

Sustainable manufacturing

At our company, we are dedicated to working towards a sustainable future. Our recycling and sustainability practices not only reduce our environmental impact but also make our operations more efficient and economically beneficial. Our goal is to offer our customers high-quality, eco-friendly furniture while protecting the planet's resources.

Guided by this vision, we are committed to innovation and continuous improvement to maintain our leadership in sustainability.

Material used	Environmental standards certificates declared by the supplier
Steel	ISO 14001
Wood	ISO 14001 FSC
Edging	ISO 14001 FSC/PEFC
Packaging	ISO 14001

FSC Certification

Our company supports responsible forestry practices by using Forest Stewardship Council (FSC) certified materials. FSC certification guarantees that the wood we use comes from sustainably managed forests that provide environmental, social and economic benefits. This certification assures our customers that our products are sourced sustainably and ethically.

ISO 14001

Our environmental management system is structured according to the ISO 14001 standard. ISO 14001 certification provides a framework for continuously improving our environmental performance. This includes strategies and processes to increase energy efficiency, reduce waste, and ensure compliance with environmental regulations. Our ISO 14001 certification demonstrates our commitment to environmental responsibility and sustainability to our customers and partners.



Sustainability

Furniture Recycling and Sustainability Policy

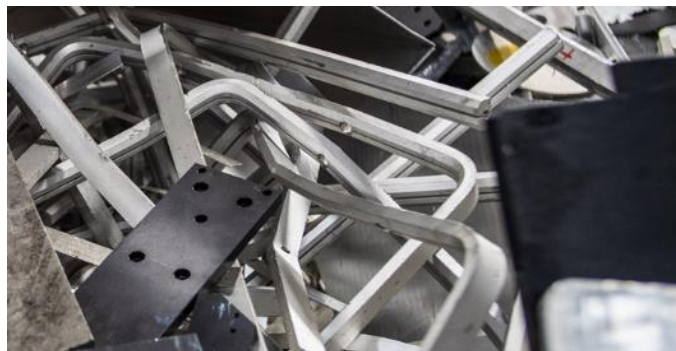
At our company, we prioritize sustainability by emphasizing furniture recycling and reducing environmental impacts. Our goal is to produce high-quality, eco-friendly furniture while conserving natural resources and minimizing waste

Recycling

In our production process, we prioritize the use of recyclable materials. By reusing and repurposing old furniture, we reduce waste and conserve natural resources. Our waste management policies ensure that materials such as wood, metal, and plastic are recovered and sent to recycling facilities whenever possible.

Recycling of Steel

- After metal sheets and profiles are used in the most efficient way through optimization programs and CNC machines, the remaining scrap metals are collected and sent to recycling companies and the metal is reintroduced into various usage areas according to its specifications.



Sustainability

Recycling of Wood

- Chipboard and MDF panels are used in the most efficient way through optimization programs and CNC machines, after which the smallest parts for furniture are cut from the remaining pieces. The leftover waste pieces and sawdust are collected in a waste collection silo and sent to the recycling company. These waste materials are used for green energy production.



Recycling of Fabric

- The fabrics are used in the most efficient way through optimization programs and CNC machines, after which the smallest parts for upholstery are cut from the remaining pieces. The leftover waste pieces are collected in a waste collection silo and sent to the recycling company. These waste materials are used for production of bags or other small textile products.

